

# EKOUS COMBO



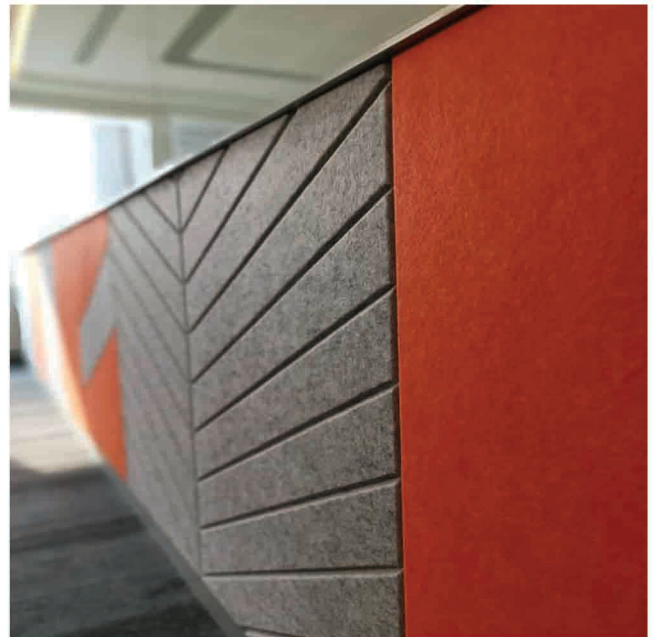
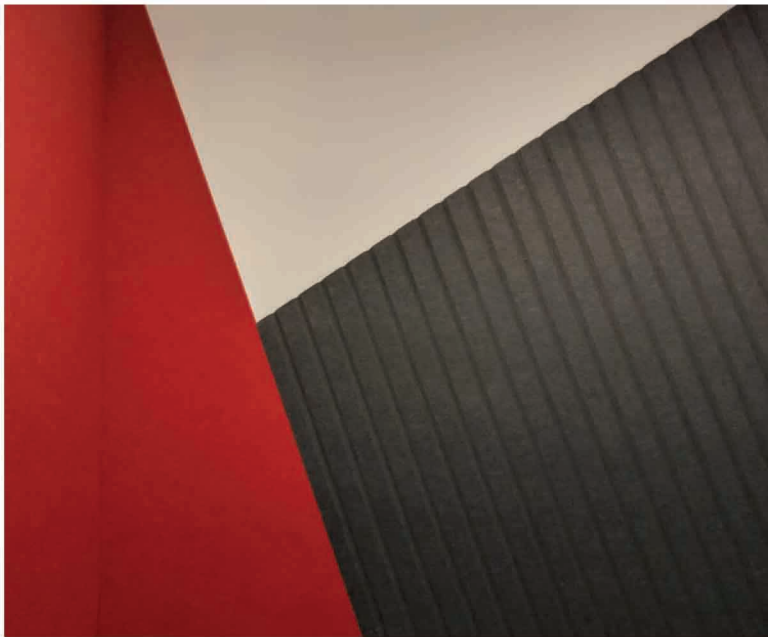


# EKOUS COMBO



## KEY FEATURES

- Available in 32 colors (9mm) and 20 colors (12mm)
- Pre-cut and customization to suit
- Excellent acoustic properties
- Fire resistance, non toxic and eco friendly
- 12 months warranty on manufacturer's defects





# ACOUSTIC WALL SPECIFICATION

PRODUCT	Ekous Combo
COMPOSITION	100% PET (Polyethelene Terephthalate)
THICKNESS	9mm / 12mm
DIMENSIONS	1200mm x 2400mm
WEIGHT	9mm (6.0 kg) / 12mm (7.0 kg)
ACOUSTIC	ISO 354 - 2006 NRC 0.4 Sonata Sheet NRC 0.6 E-Wall Standard NRC 0.8 E-Wall Plus NRC 0.95 E-Wall EX
EMISSION	SGS Formaldehyde Free (Toxicity) SGS Toulene Free (Chemical Fume)
COMPLIANCE	SGS ROHS Free (Restriction Of Hazardous Substance) TUV VOC Free (Volatile Organic Compound)
FIRE TEST	TUV BS476 Part 7 - Class Y1 (Non fire spread) TUV EN13501-1 - Class B-S1,d0 (Non flammable)

## PROFILES



EK 1 - Straight Edge



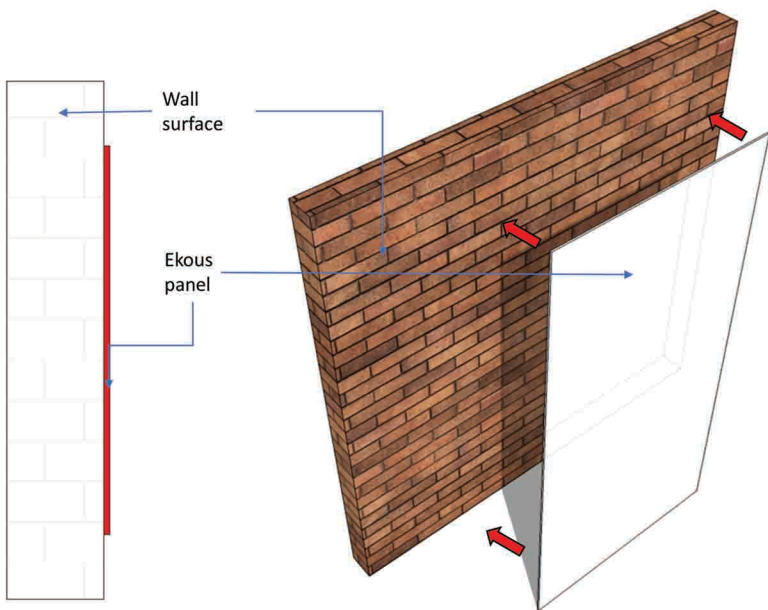
EK 2 - Half Bevel



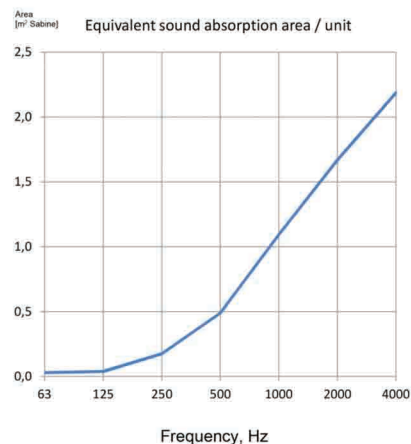
EK 6 - Full Bevel



# ACOUSTIC WALL APPLICATION

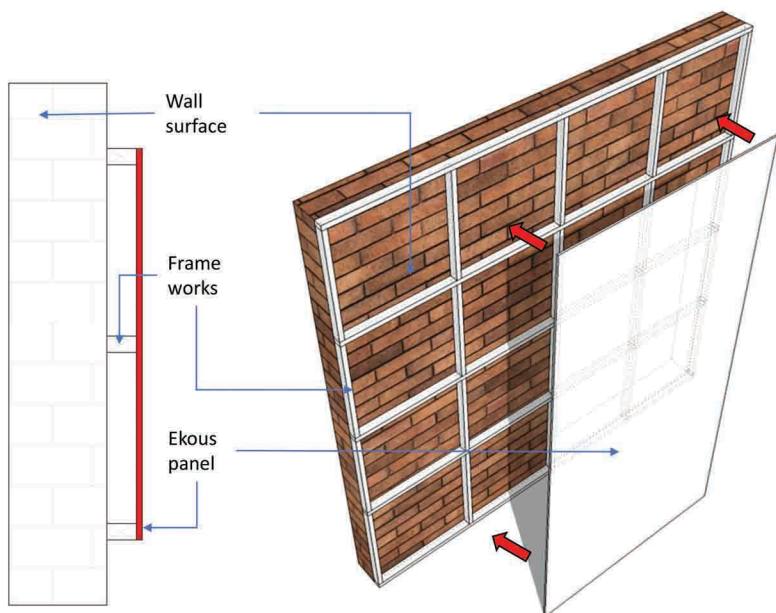


1/3 octave band (Hz)	Equivalent sound absorption area / unit (m <sup>2</sup> Sabine)	
	1/3 octave band	Octave band
50	0,03	
63	0,03	0,0
80	0,03	
100	0,00	
125	0,03	0,0
160	0,09	
200	0,09	
250	0,18	0,2
315	0,26	
400	0,35	
500	0,47	0,5
630	0,64	
800	0,88	
1000	1,08	1,1
1250	1,32	
1600	1,46	
2000	1,67	1,7
2500	1,87	
3150	2,05	
4000	2,17	2,2
5000	2,34	

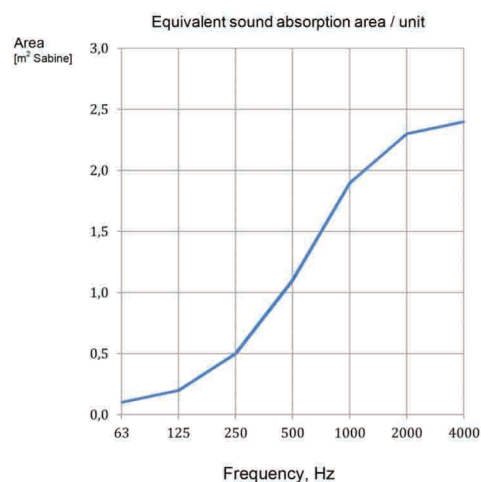


## SONATA SHEET

APPLICATION TYPE Direct cladding  
 THICKNESS 9mm  
 RATING VALUE Class D - Good  
 NRC VALUE 0.4



1/3 octave band (Hz)	Equivalent sound absorption area / unit (m <sup>2</sup> Sabine)	
	1/3 octave band	Octave band
50	0,03	
63	0,1	0,1
80	0,15	
100	0,12	
125	0,23	0,2
160	0,28	
200	0,36	
250	0,47	0,5
315	0,66	
400	0,87	
500	1,04	1,1
630	1,43	
800	1,72	
1000	1,95	1,9
1250	2,08	
1600	2,27	
2000	2,34	2,3
2500	2,32	
3150	2,32	
4000	2,38	2,4
5000	2,65	



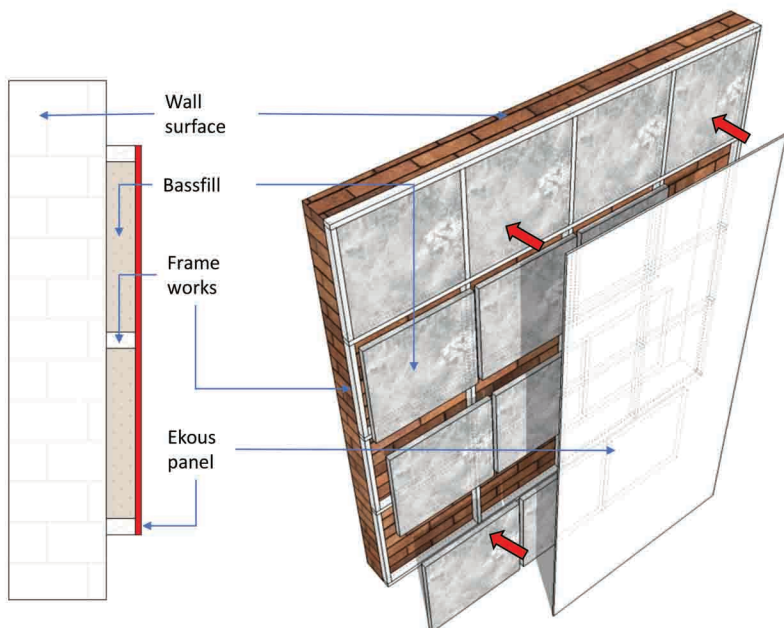
## E-WALL STANDARD

APPLICATION TYPE Frameworks cladding (Air gap)  
 THICKNESS 45mm  
 RATING VALUE Class C - Better  
 NRC VALUE 0.6

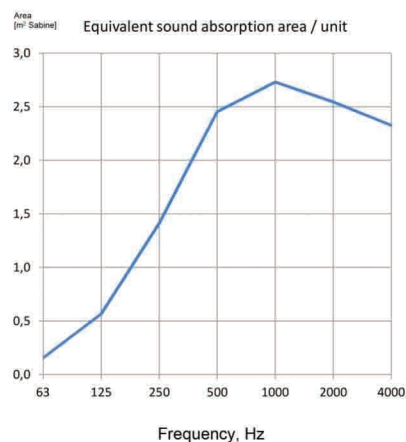




# ACOUSTIC WALL APPLICATION

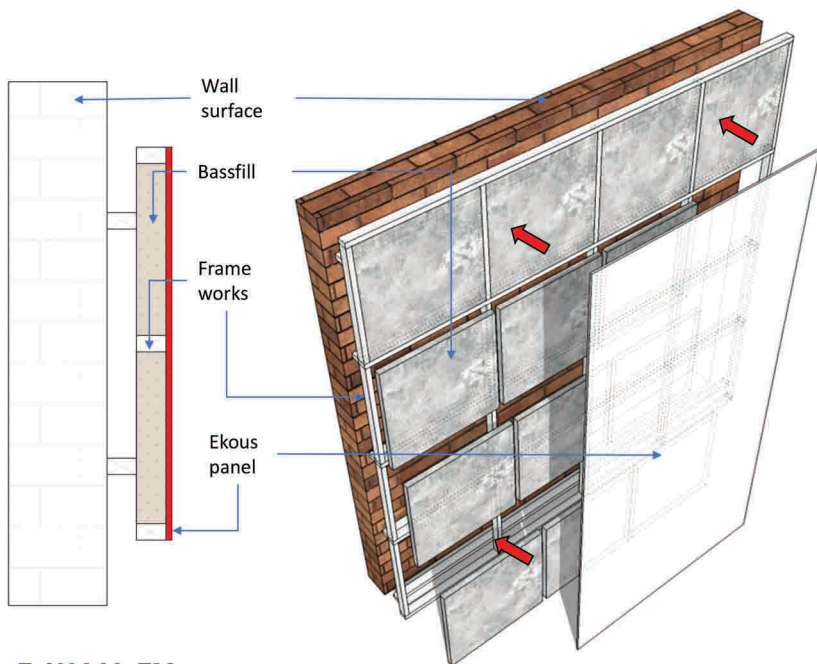


1/3 octave band (Hz)	Equivalent sound absorption area / unit (m <sup>2</sup> Sabine)	
	1/3 octave band	Octave band
50	0,00	
63	0,13	0,2
80	0,34	
100	0,45	
125	0,53	0,6
160	0,72	
200	1,07	
250	1,33	1,4
315	1,84	
400	2,16	
500	2,46	2,5
630	2,74	
800	2,89	
1000	2,66	2,7
1250	2,64	
1600	2,59	
2000	2,56	2,5
2500	2,48	
3150	2,57	
4000	2,25	2,3
5000	2,16	

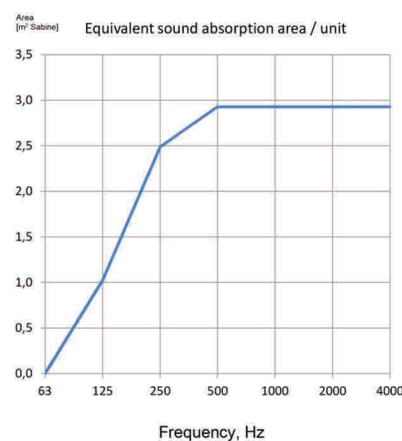


## E-WALL PLUS

APPLICATION TYPE	Frameworks + Bassfill cladding (Insulation)
THICKNESS	45mm
RATING VALUE	Class B - Best
NRC VALUE	0.8



1/3 octave band (Hz)	Equivalent sound absorption area / unit (m <sup>2</sup> Sabine)	
	1/3 octave band	Octave band
50	0,18	
63	0,29	0,0
80	0,35	
100	0,73	
125	0,88	1,0
160	1,41	
200	1,96	
250	2,46	2,5
315	2,84	
400	2,93	
500	2,96	2,9
630	3,05	
800	3,07	
1000	3,07	2,9
1250	3,02	
1600	2,99	
2000	3,02	2,9
2500	3,05	
3150	3,05	
4000	3,10	2,9
5000	3,22	



## E-WALL EX

APPLICATION TYPE	Frameworks + Bassfill cladding (Insulation + Air gap)
THICKNESS	90mm
RATING VALUE	Class A - Excellent
NRC VALUE	0.95



# COLOR PALETTES - 9MM THICKNESS



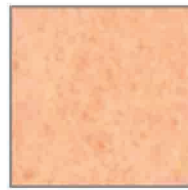
OF-04 Off White



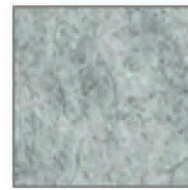
LC-01 Light Camel



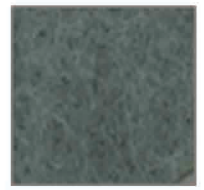
DC-02 Dark Camel



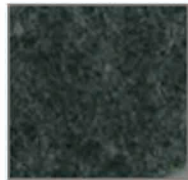
SC-07 Soft Cream



SG-03 Silver Grey



DG-37 Deep Grey



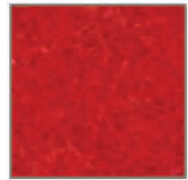
CH-17 Charcoal



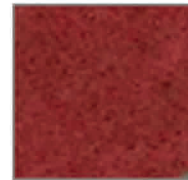
PB-10 Pure Black



HR-31 Hot Red



SR-15 Spectrum Red



RW-27 Red Wine



MR-32 Maroon Red



SG-05 Shiny Green



AG-41 Apple Green



GG-14 Green Grass



DG-19 Dark Green



WC-30 White Coffee



LO-36 Light Oak



DB-34 Dark Brown



DB-35 Dark Bronze



RR-38 Romantic Rose



VR-33 Violet Rose



PL-30 Purple Lilac



YP-36 Yam Purple



SY-18 Sunny Yellow



SY-22 Smart Yellow



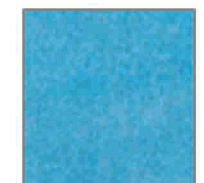
SO-39 Sweety Orange



MO-24 Mandarin Orange



SB-29 Sky Blue



SB-40 Sea Blue



BB-21 Bright Blue



IB-09 Indigo Blue

## MAINTENANCE

Light vacuuming for dust prevention are recommended. Most marks can be cleaned with mild detergent solution followed by rinsing and blotting. Refer to our stain treatment guide for further info.

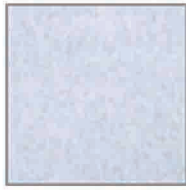




# COLOR PALETTES - 12MM THICKNESS



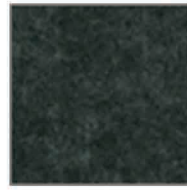
WS-01 White Satin



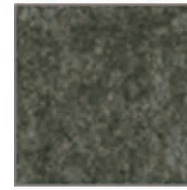
DW-03 Dust White



AG-04 Ash Grey



SG-05 Stone Grey



SB-06 Sandy Brown



DG-07 Dark Grey



GT-09 Golden Tan



SB-08 Steel Blue



OG-10 Olive Green



PB-13 Pure Black



DC-14 Dark Cyan



SG-15 Sea Green



FG-16 Forest Green



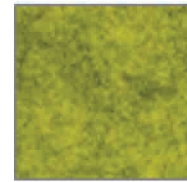
MO-17 Mandarin Orange



CR-18 Chili Red



BP-19 Berry Purple



SL-20 Spotty Lime



ML-22 Minty Lime



SY-23 Sunny Yellow



OB-24 Ocean Blue

## MAINTENANCE

Light vacuuming for dust prevention are recommended. Most marks can be cleaned with mild detergent solution followed by rinsing and blotting. Refer to our stain treatment guide for further info.







# COLOR PALETTES - 8MM THICKNESS (HD) E-CHART



SN-01 Snow White



BW-02 Barley White



LM-03 Light Mocha



CB-04 Choco Brown



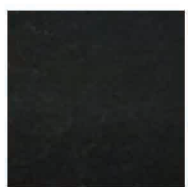
MG-05 Misty Grey



DG-06 Dim Grey



SG-07 Sleek Grey



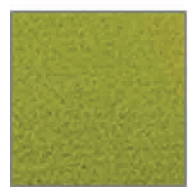
HB-08 Hollow Black



TB-17 Turquoise Blue



HB-10 High Blue



GT-11 Green Tea



CY-12 Cheerful Yellow



SO-13 Saffron Orange



PR-14 Peak Red



VR-15 Vermillion Red



RP-16 Royale Purple

## MAINTENANCE

Light vacuuming for dust prevention are recommended. Most marks can be cleaned with mild detergent solution followed by rinsing and blotting. Refer to our stain treatment guide for further info.







# COLOR PALETTES - 3MM THICKNESS (FELT) E-CHART



TG-301 Turf Green



GB-302 Graphite Black



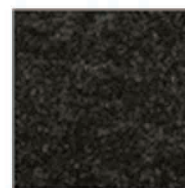
MR-303 Magenta Red



CB-304 Cobalt Blue



PV-305 Purple Violet



CG-306 Charcoal Grey



BO-307 Bright Orange



HR-308 Hotty Red



LB-309 Light Blue



SY-310 Shinny Yellow



EB-311 Earthy Brown



MB-312 Mocha Brown



WB-313 Woody Brown



NG-314 Neon Green



FG-315 Field Green



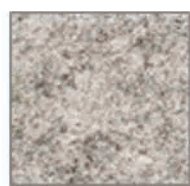
SW-316 Silky White



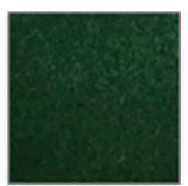
DP-317 Deep Purple



PP-318 Pale Pink



GG-319 Granite Grey



DG-320 Dark Green

## MAINTENANCE

Light vacuuming for dust prevention are recommended. Most marks can be cleaned with mild detergent solution followed by rinsing and blotting. Refer to our stain treatment guide for further info.





MAIN OFFICE

13-1 to 13-6, Block F1,  
Jalan PJU 1/42,  
Dataran Prima, 47301  
Selangor Darul Ehsan, Malaysia.

Ekous Sound Lab

19-5, Block D,  
Jalan PJU 1/39,  
Dataran Prima, 47301  
Selangor Darul Ehsan, Malaysia.

T : +603 78049 111

E : [info@ekous.net](mailto:info@ekous.net)

W : [www.ekous.net](http://www.ekous.net)

Malaysia • Singapore • Thailand • Indonesia • Philippines  
Australia • Hong Kong • India • UAE • Sweden