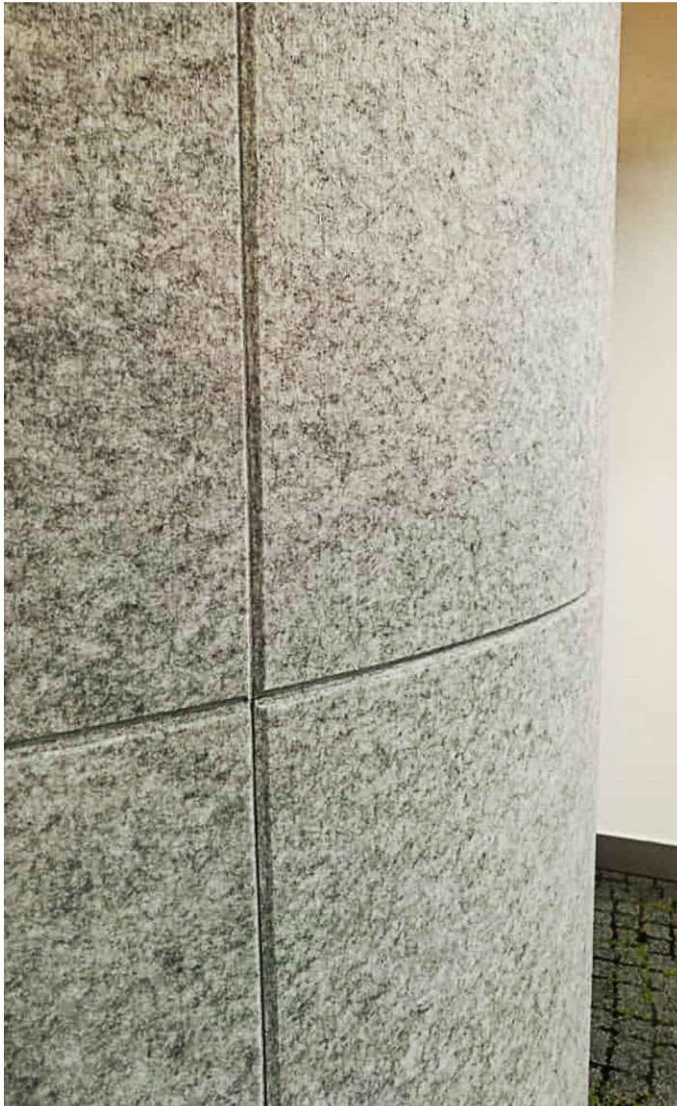
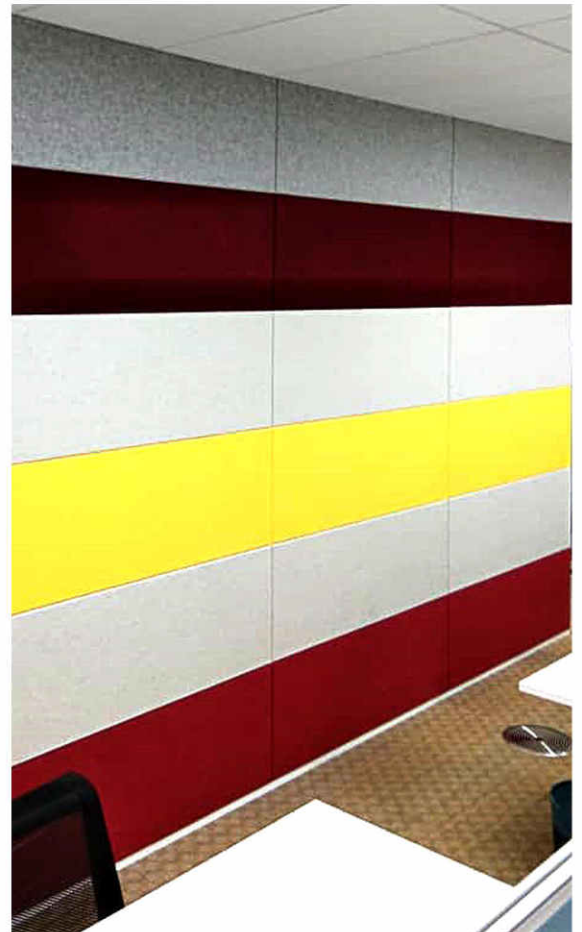
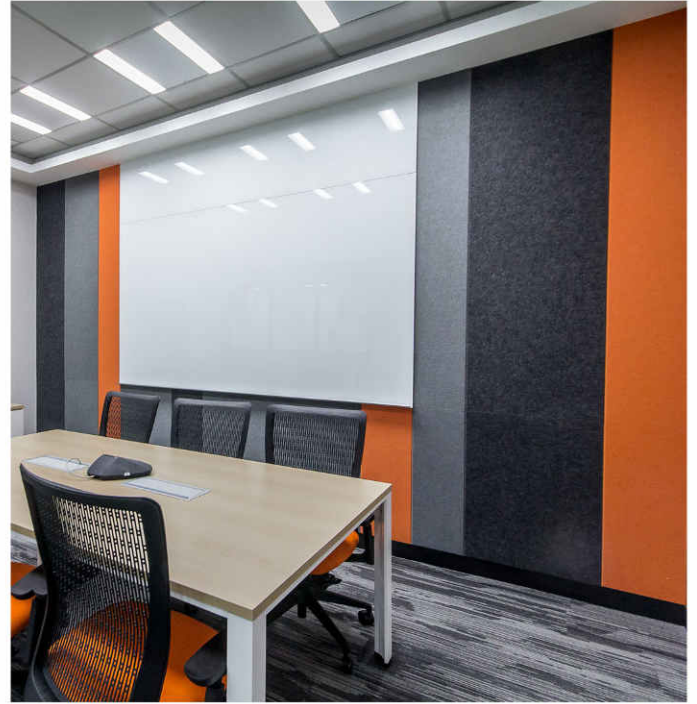
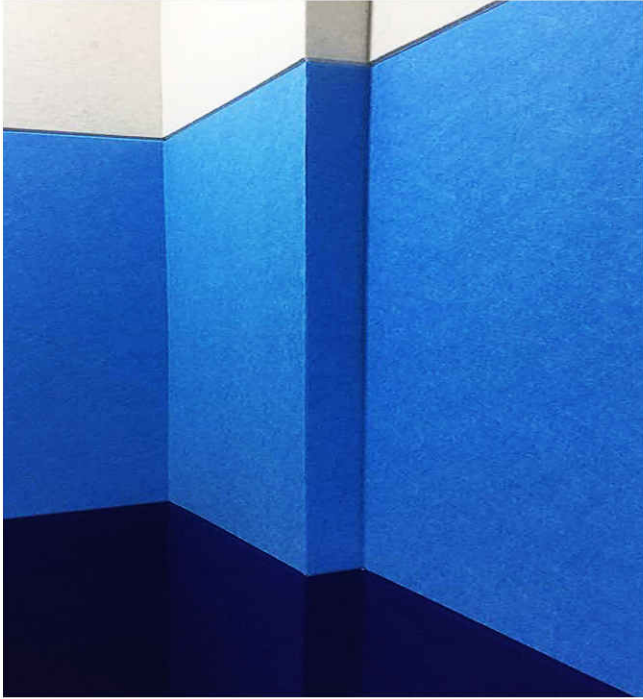


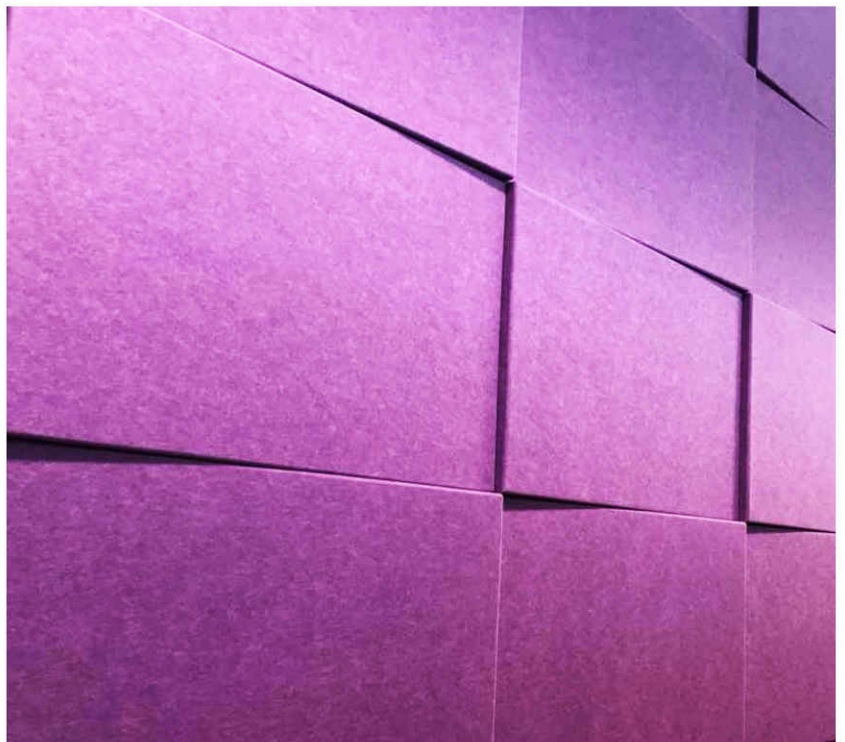
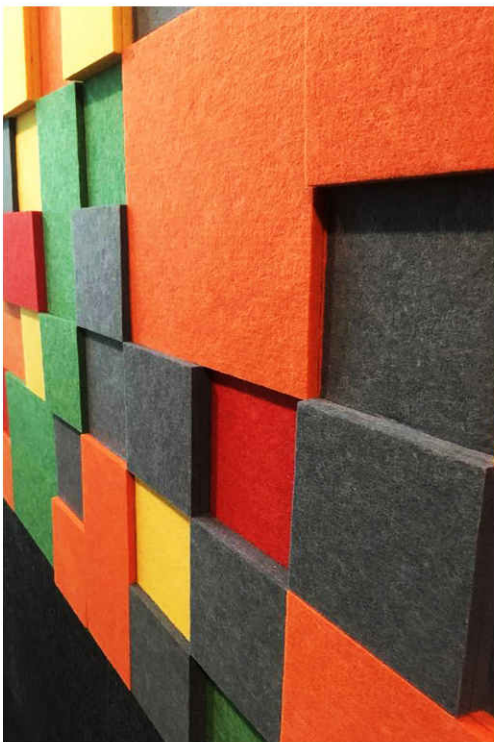
SONATA STANDARD

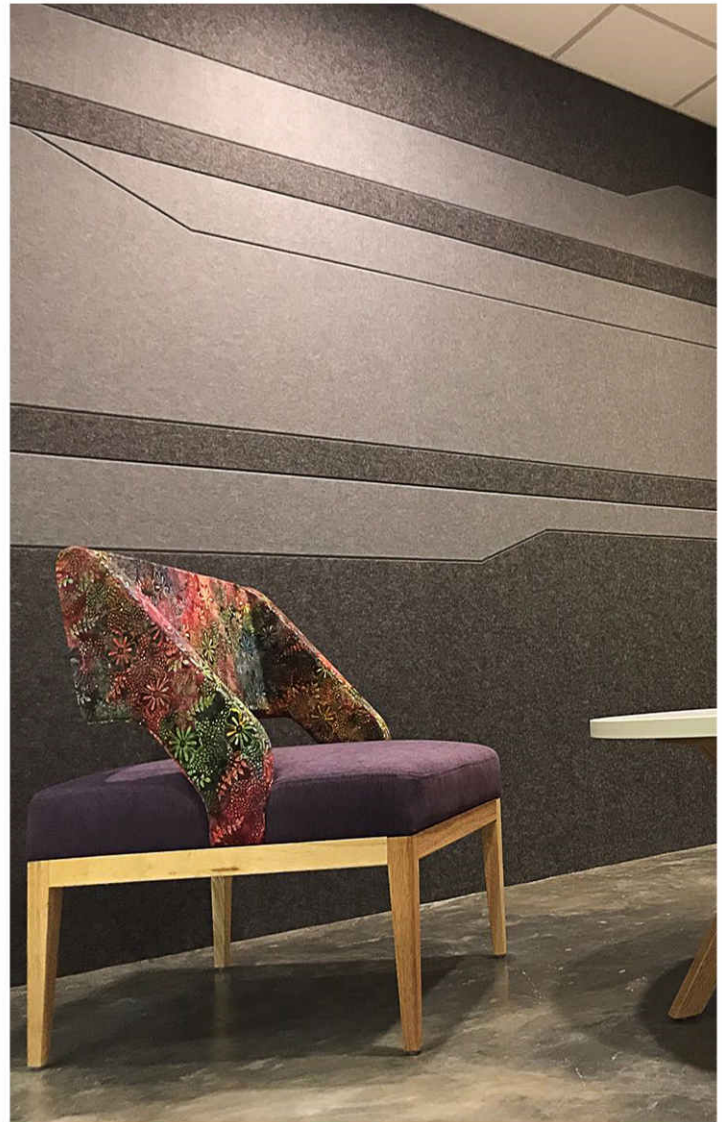
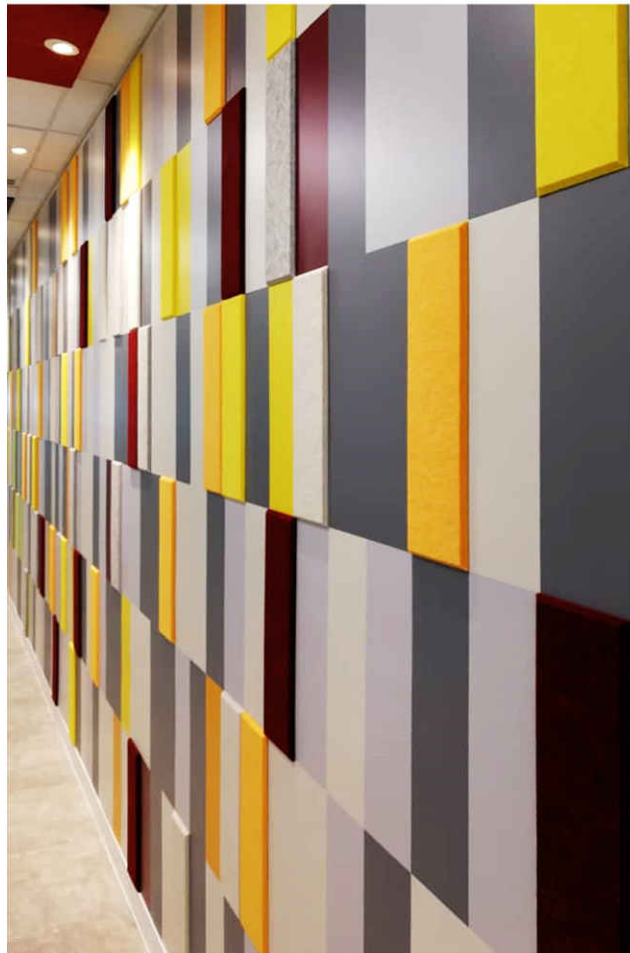
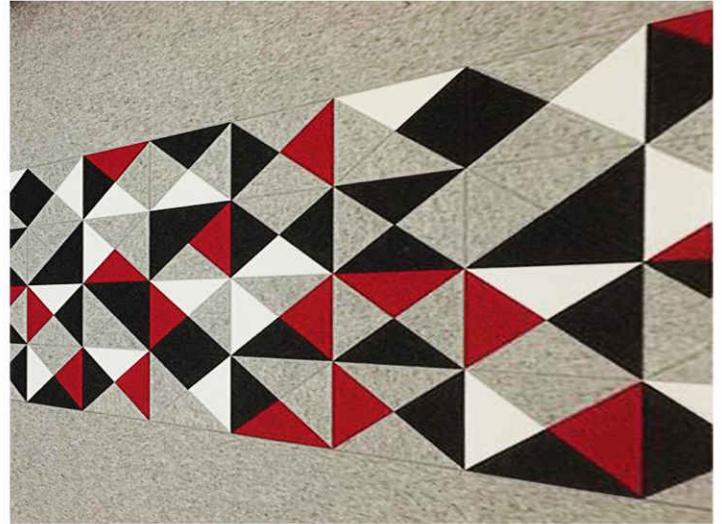
Sonata comes in various colors availabilities where it can transform a plain wall into an interesting yet acoustically effective wall/ ceiling finishes. In addition, it can be in multi shape and pattern which provide a simple diffusion and absorbent properties where reduces reverberations and unwanted sound reflections in any activity of spaces.







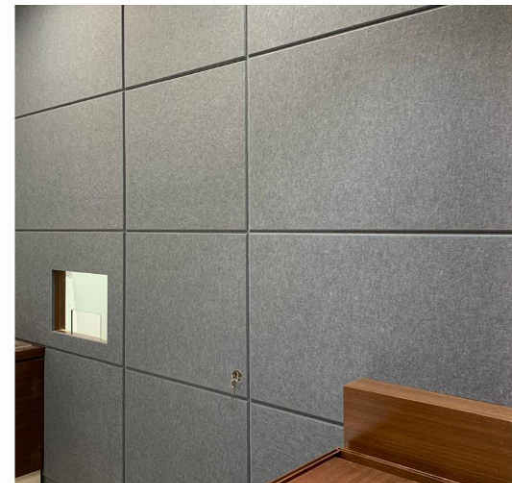
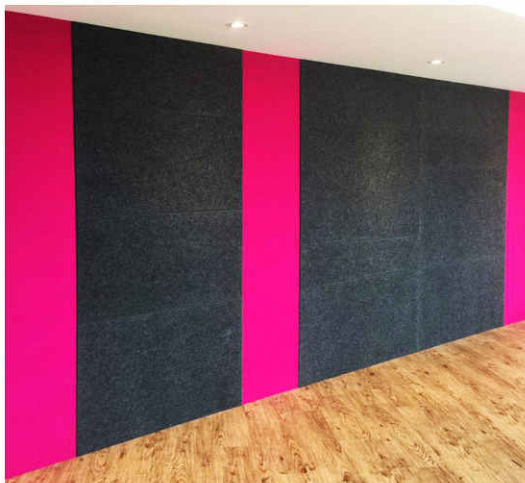
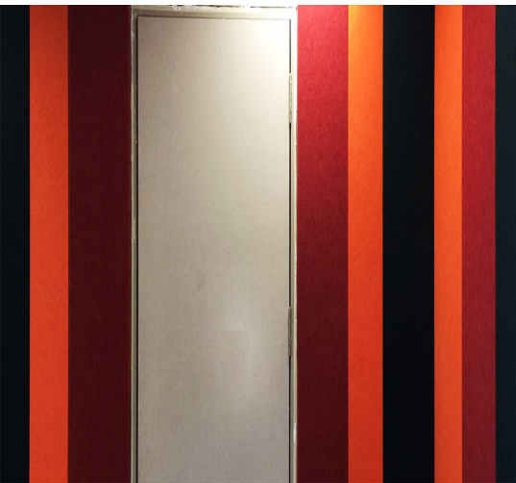






Acoustic Wall & E Wall

CODE	PRODUCT	FEATURES	THICKNESS
SW/9	Acoustic Wall	Single layer / direct clad	9mm
SW/12	Acoustic Wall	Single layer / direct clad	12mm
EW/40	E Wall	Single layer / direct clad with EK Bassfill	40mm
EW/50	E Wall	Single layer / direct clad with EK Bassfill	50mm



Acoustic Wall & E Wall

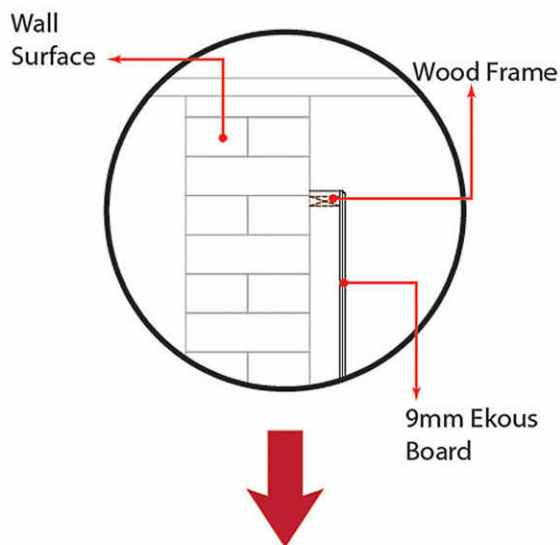
CODE	PRODUCT	FEATURES	THICKNESS
SW/9	Acoustic Wall	Single layer / direct clad	9mm
SW/12	Acoustic Wall	Single layer / direct clad	12mm
EW/40	E Wall	Single layer / direct clad with EK Bassfill	40mm
EW/50	E Wall	Single layer / direct clad with EK Bassfill	50mm

EDGING PROFILES



Application & Fabrication type

E-Wall Standard



Better (Class C)

NRC 0.6

NRC stand for Noise Reduction Coefficient and is a standard rating for how well a material absorb sound. The NRC rating of a material can be view as a percentage. For example, an NRC of 0.80 means 80% of the sound energy that contacts the material is absorbed and is not reflected back into a room.

Remarks:

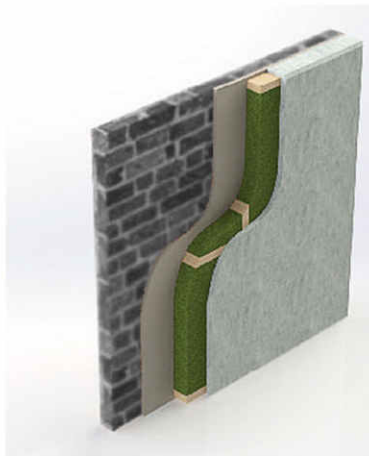
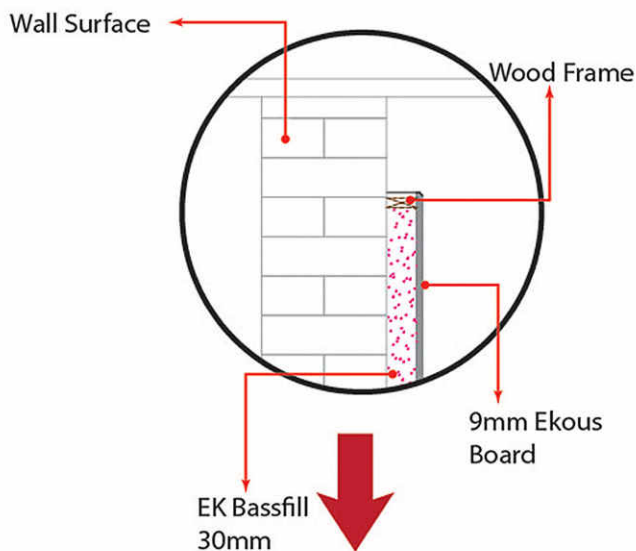
*Best applied into 2 adjacent wall

*E Wall with Bassfill coverage should be at least 30% of the room area

*E Wall without Bassfill coverage should be at least 50% of the room area

Application & Fabrication type

E-Wall Plus



Best (Class A)

NRC 0.8

NRC stand for Noise Reduction Coefficient and is a standard rating for how well a material absorb sound. The NRC rating of a material can be view as a percentage. For example, an NRC of 0.80 means 80% of the sound energy that contacts the material is absorbed and is not reflected back into a room.

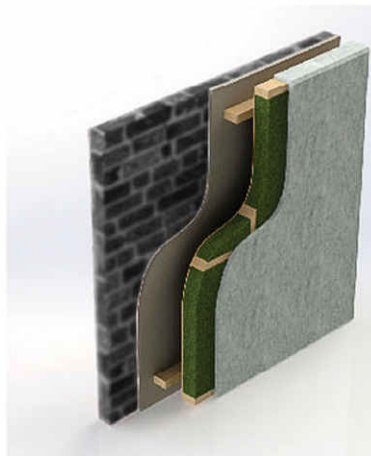
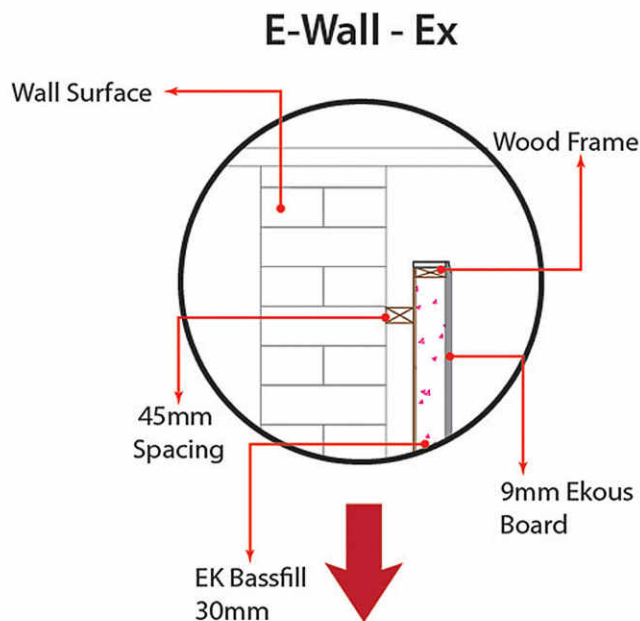
Remarks:

*Best applied into 2 adjacent wall

*E Wall with Bassfill coverage should be at least 30% of the room area

*E Wall without Bassfill coverage should be at least 50% of the room area

Application & Fabrication type



Excellent (Class A)

NRC 0.95

NRC stand for Noise Reduction Coefficient and is a standard rating for how well a material absorb sound. The NRC rating of a material can be view as a percentage. For example, an NRC of 0.80 means 80% of the sound energy that contacts the material is absorbed and is not reflected back into a room.

Remarks:

*Best applied into 2 adjacent wall

*E Wall with Bassfill coverage should be at least 30% of the room area

*E Wall without Bassfill coverage should be at least 50% of the room area

Technical info

SPECIFICATION

Product name	:	Sonata Standard
Composition	:	100% PET (Polyethelene Terephthalate) 60% recycle
Thickness	:	Standard 9mm / 12mm
Panel Dimension	:	1220mm x 2440mm
Weight	:	6.0kg (9mm) 7.0kg (12mm)

PERFORMANCE

Sound Absorption	:	ISO 354 - 2006
NRC	:	0.35 without air gap 0.55 with 20mm air gap 0.75 with 50mm air gap
Emission	:	VOC & Formaldehyde free
Compliance	:	OHS free

** All sizes are nominal and subject to manufacturing tolerance that may vary + or - 1mm thickness and + or - 3mm for width and length.

** Exact fittings may require on site adjustment. Exact size and other unavoidable variables such as dye lot color variations, lighting condition, pattern matching, directional material, expansion and contraction due to environmental condition.

** Project with exact visual requirement and expectation must be identified for our special attention prior to ordering.

** Although we take extensive precautions and purge the line between colors due to recycling manufacturing process color inconsistencies including dye lot variations, flecks, specks and other slight surface blemish are unavoidable.

** We have a strict quality inspection system that will strictly control product quality to ensure quality meets the standards.

Colors availability - 9mm thickness



Colors availability - 12mm thickness

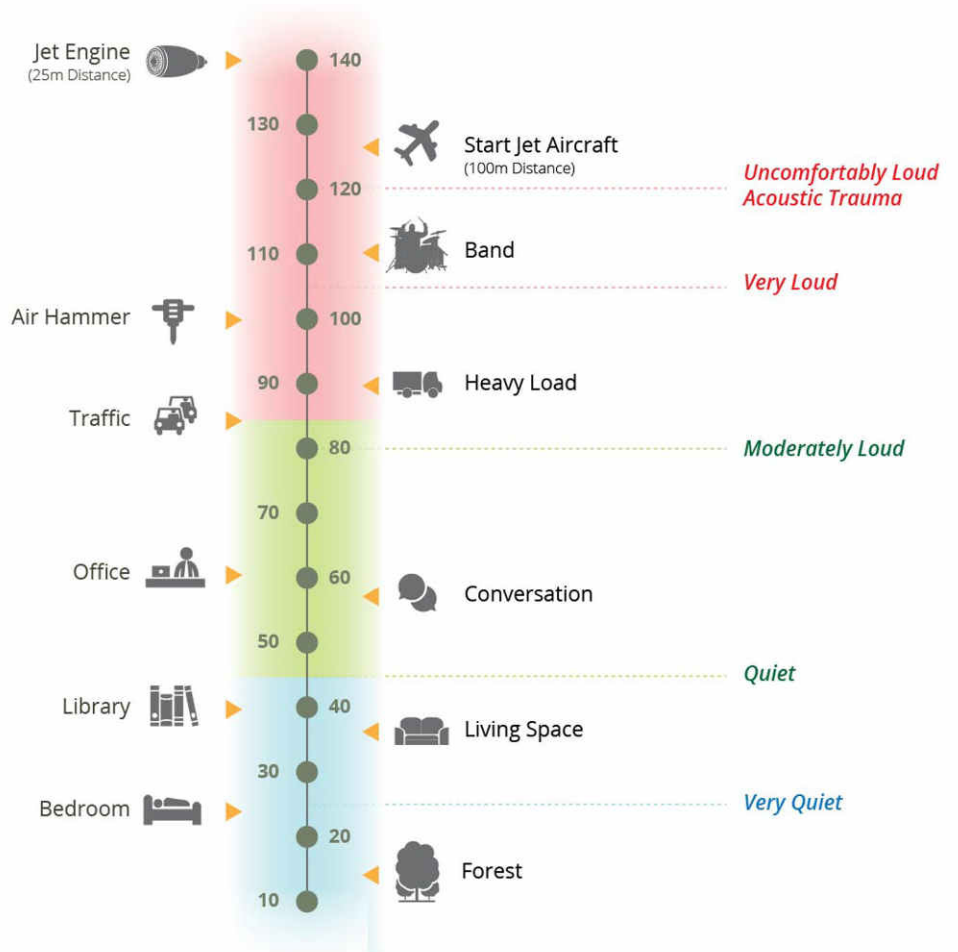


Fact Sheet

How loud is **TOO LOUD?**

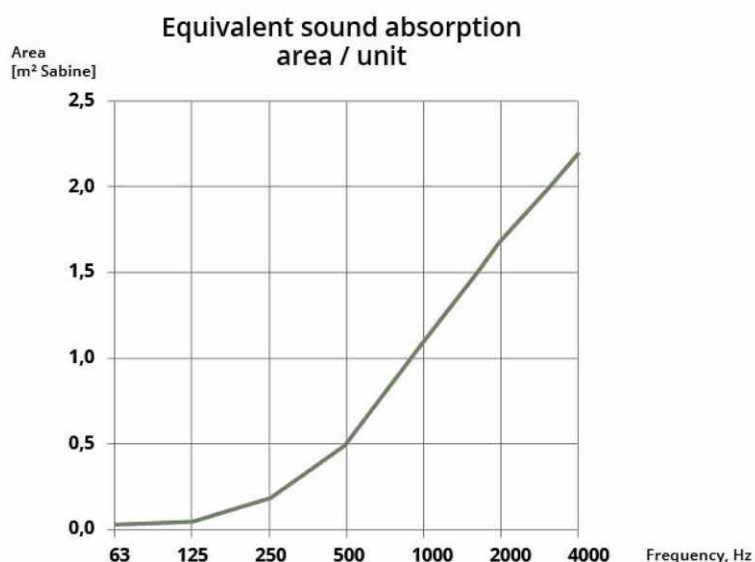
SOUND LEVEL

Volume level is measured by Decibel (dB)



Specification & Performance - 9mm thickness (direct clad)

1/3 octave band (Hz)	Equivalent sound absorption area / unit (m ² Sabine)	
	1/3 octave band	Octave band
50	0,03	-
63	0,03	0,0
80	0,03	-
100	0,00	-
125	0,03	0,0
160	0,09	-
200	0,09	-
250	0,18	0,2
315	0,26	-
400	0,35	-
500	0,47	0,5
630	0,64	-
800	0,88	-
1000	1,08	1,1
1250	1,32	-
1600	1,46	-
2000	1,67	1,7
2500	1,87	-
3150	2,05	-
4000	2,17	2,2
5000	2,34	-

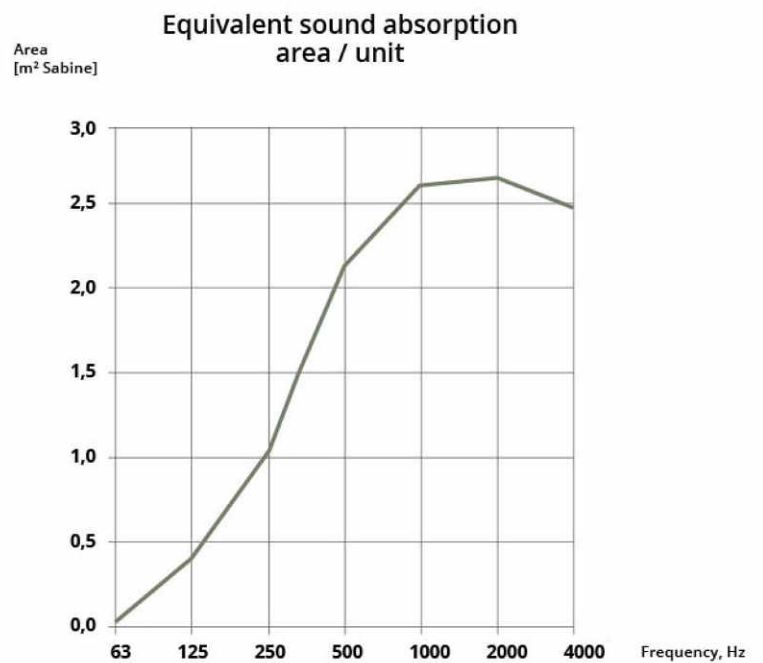


OBJECT : Textura 9 mm mounted directly to the wall
Size [mm]: w = 2400 h = 1220 t = 9

NRC (Noise Reduction Coefficient) = 0.35

Specification & Performance - 45mm thickness (wall mounted)

1/3 octave band (Hz)	Equivalent sound absorption area / unit (m ² Sabine)	
	1/3 octave band	Octave band
50	0,00	-
63	0,07	0,1
80	0,24	-
100	0,36	-
125	0,39	0,4
160	0,40	-
200	0,74	-
250	1,03	1,0
315	1,34	-
400	1,80	-
500	2,18	2,1
630	2,46	-
800	2,61	-
1000	2,58	2,6
1250	2,62	-
1600	2,67	-
2000	2,65	2,6
2500	2,55	-
3150	2,48	-
4000	2,52	2,5
5000	2,45	-



OBJECT : Textura 45 mm mounted directly to the wall
Size [mm]: w = 1800 h = 1200 t = 45

NRC (Noise Reduction Coefficient) = 0.60